

Hypnopædia

140 Patterns

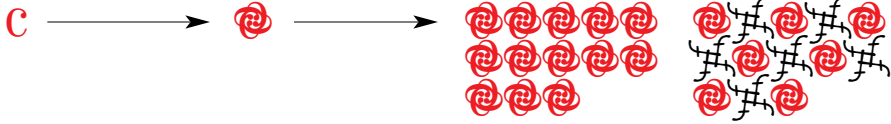


DESIGNED BY

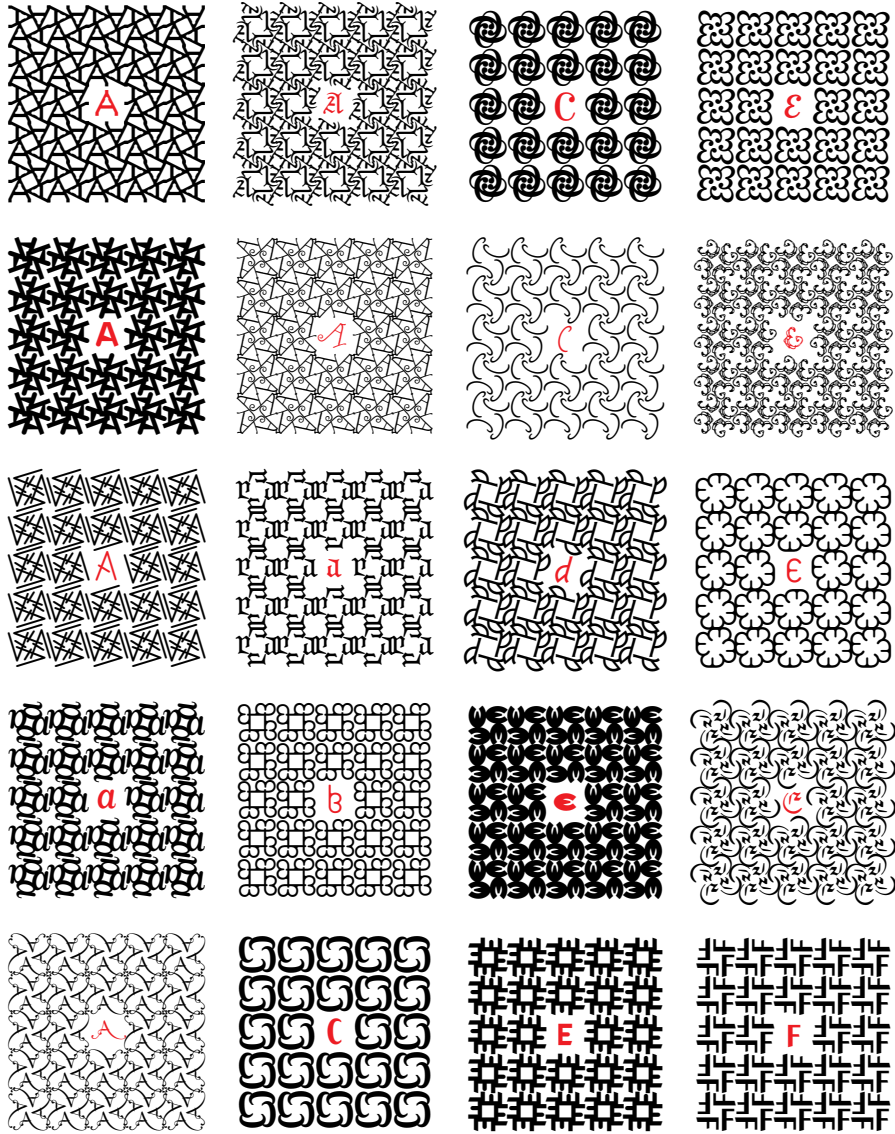
ZUZANA LICKO

BOOKLET DESIGNED BY RUDY VANDERLANS

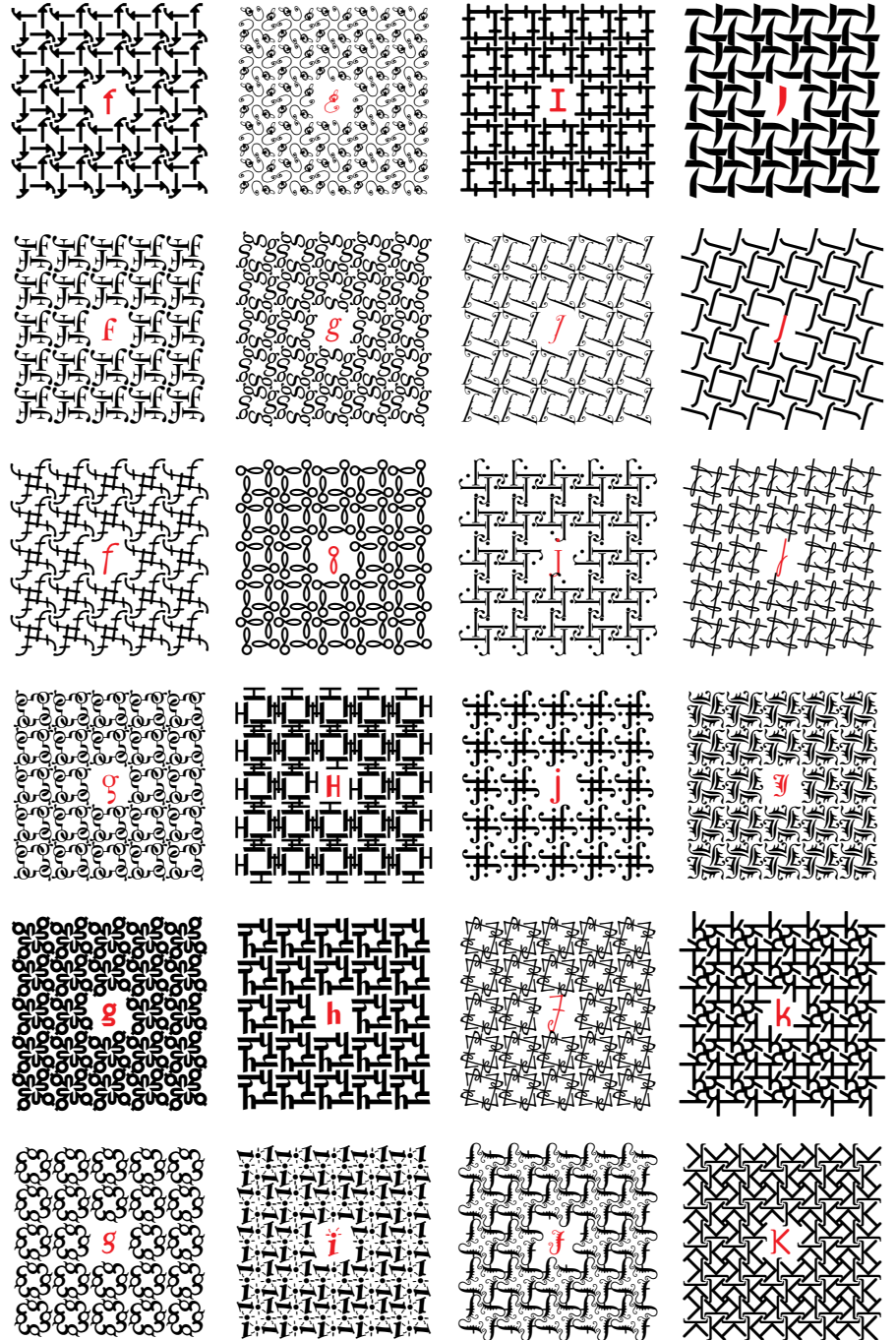
COPYRIGHT © 1997 EMIGRE FONTS



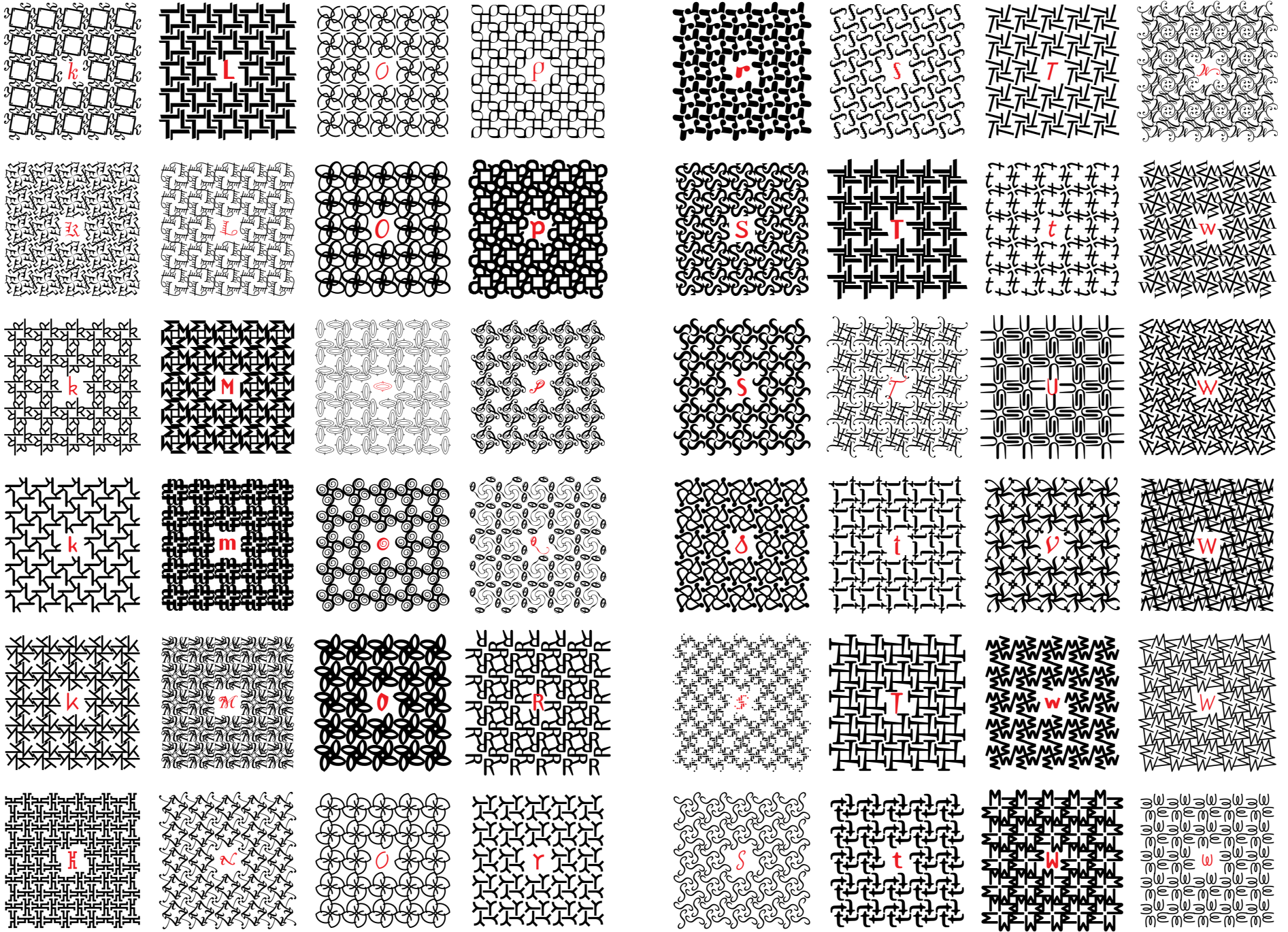
Each Hypnopædia illustration was created by concentric rotation of a single letterform from the Emigre Fonts library. When repeated, each Hypnopædia illustration creates a unique pattern of interlocking letter shapes. An infinite variety of patterns can be composed by combining and alternating the basic 140 Hypnopædia illustrations.



The 140 basic Hypnopædia patterns and their origins.

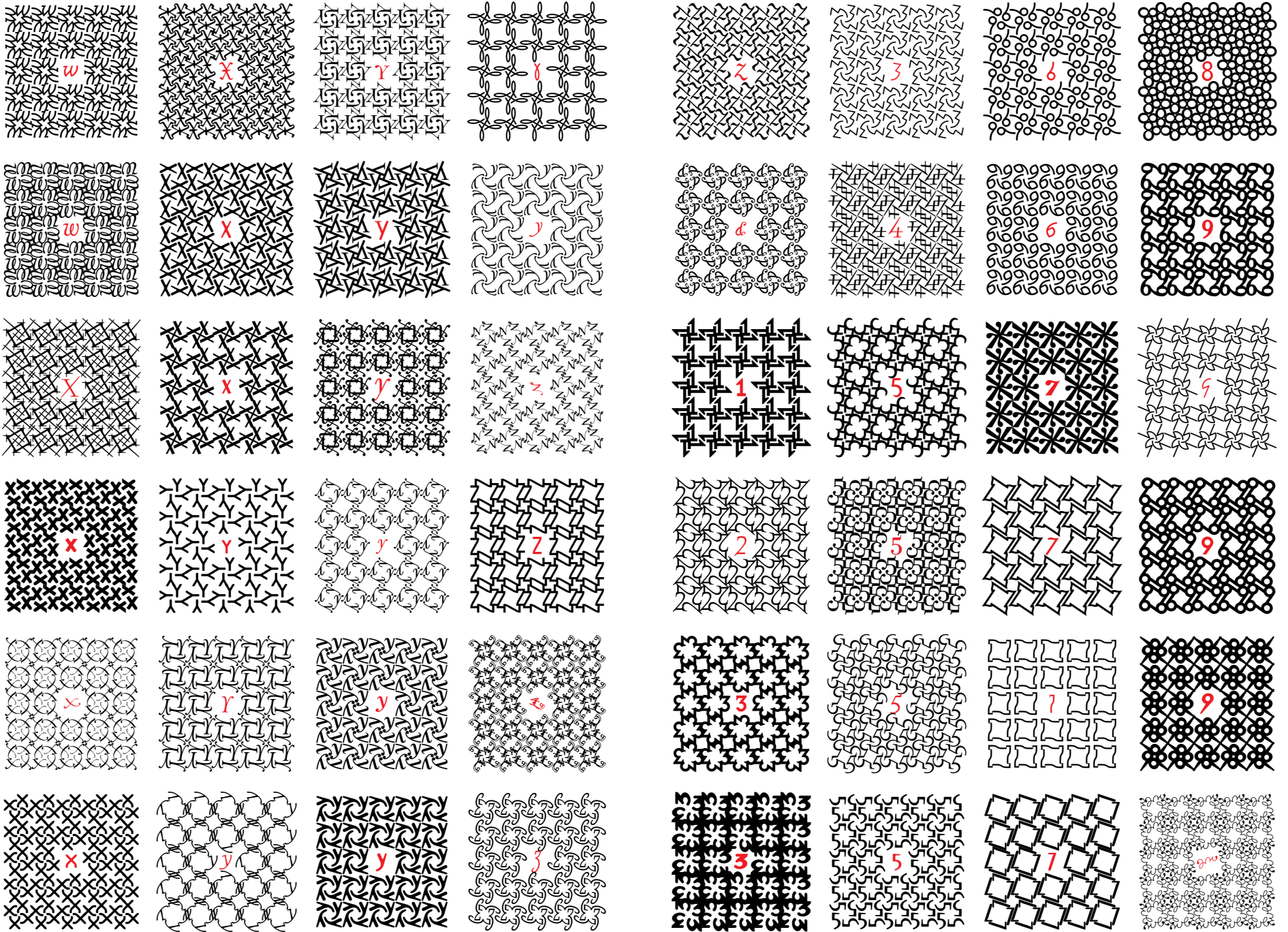


The 140 basic Hypnopædia patterns and their origins.



The 140 basic Hypnopædia patterns and their origins.

The 140 basic Hypnopædia patterns and their origins.



The 140 basic Hypnopædia patterns and their origins.

The 140 basic Hypnopædia patterns and their origins.

