

**RIGHT NOW I AM SITTING ON A HILL** overlooking the Marble Fork of the Kaweah River. The colors are glorious—fleecy white clouds, a clear blue sky, distant blue hills flecked with snow, tall pines all around me, monstrous grey glacial boulders, and patches of sunlit moss on the fir trees. The snow water rushes and pounds through its rocky channel, tumbling frothily into lucent green pools.

**RIGHT NOW I AM SITTING ON A HILL** overlooking the Marble Fork of the Kaweah River. The colors are glorious—fleecy white clouds, a clear blue sky, distant blue hills flecked with snow, tall pines all around me, monstrous grey glacial boulders, and patches of sunlit moss on the fir trees. The snow water rushes and pounds through its rocky channel, tumbling frothily into lucent green pools.

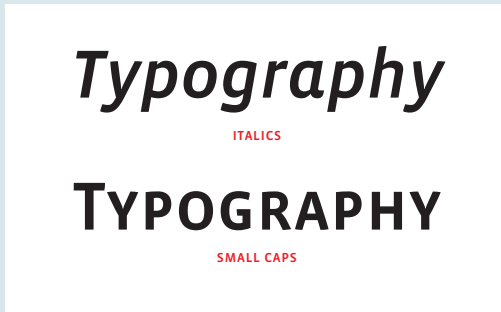
**RIGHT NOW I AM SITTING ON A HILL** overlooking the Marble Fork of the Kaweah River. The colors are glorious—fleecy white clouds, a clear blue sky, distant blue hills flecked with snow, tall pines all around me, monstrous grey glacial boulders, and patches of sunlit moss on the fir trees. The snow water rushes and pounds through its rocky channel, tumbling frothily into lucent green pools.

**Vista Sans** was designed in 2004 by Xavier Dupré. The designer's intention was to create a typeface family for text and display that would combine the humanist appeal of calligraphic forms with the pragmatic simplicity of the sans.

There are many subtle details in Vista that become interesting at large sizes; for example, the elegant, slightly bulging edge on some of the stroke endings. Other details include ink traps in some characters (x, v, w...) and squarely notched inside cusps in other characters (b, n, r...).

Alternate forms were added to many characters to provide subtle variety for titling usage.

In 2008 Dupré added narrow and slab versions, extending the Vista family to a total of 108 fonts.



ABCDEFGH©®?!\*’”“”’&abcdefgh@ \$0123456789€%

DEFAULT

ABCDEFGH©®?!\*’”“”’&ABCDEFGH@ \$0123456789€%

ALL CAPS

ABCDEFGH©®?!\*’”“”’&ABCDEFGH@ \$0123456789€%

SMALL CAPS

ABCDEFGHI©®?!\*’”“”’&ABCDEFGH@ \$0123456789€%

ALL SMALL CAPS

ABCDEFGH©®?!\*’”“”’@abcdefgh@ \$0123456789€%

ALTERNATES "TITLING ALTERNATES" OR "STYLISTIC ALTERNATES" (SANS AND SANS NARROW ONLY)

0123456789

PROPORTIONAL OLD STYLE NUMBERS

0123456789

PROPORTIONAL LINING NUMBERS

0123456789

TABULAR OLD STYLE NUMBERS

0123456789

TABULAR LINING NUMBERS

0123456789 0123456789 2<sup>2</sup> H<sub>2</sub>O h<sup>2</sup>=a<sup>2</sup>+b<sup>2</sup>

SUPERIOR NUMBERS & SCIENTIFIC INFERIOR NUMBERS (EXCEPT ITALICS)

0123456789 0123456789 Footnote<sup>36</sup>

NUMERATOR & DENOMINATOR (EXCEPT ITALICS)

1/2 1/3 2/3 1/4 1/8 3/8 5/8 7/8 1/16 3/16 1/32 1/64 1/100

FRACTIONS & ARBITRARY FRACTIONS (EXCEPT ITALICS)

← ↓ → ↑ ← ↓ → ↑ ← ↓ → ↑ ◀ ▶ ◆ ◊ ◻ ◼ ◽ ◾ ◿ ||

ARROWS & ORNAMENTS

Vista fonts are available in both OpenType and Classic (TYPE 1) formats.

ABCDEFGHIJabcdefgh

1. LIGHT

ABCDEFGHIJabcdefgh

2. REGULAR

**ABCDEFGHIJabcdefgh**

3. BOLD

ABCDEFGHIJabcdefgh

4. ALTERNATE LIGHT

ABCDEFGHIJabcdefgh

5. ALTERNATE REGULAR

**ABCDEFGHIJabcdefgh**

6. ALTERNATE BOLD

ABCDEFGHIJabcdefgh

7. LIGHT ITALIC

ABCDEFGHIJabcdefgh

8. REGULAR ITALIC

**ABCDEFGHIJabcdefgh**

9. BOLD ITALIC

ABCDEFGHIJabcdefgh

10. ALTERNATE LIGHT ITALIC

ABCDEFGHIJabcdefgh

11. ALTERNATE REGULAR ITALIC

**ABCDEFGHIJabcdefgh**

12. ALTERNATE BOLD ITALICS

ABCDEFGHIH  
IJKLMNOPQRS  
TUVWXYZ  
abcdefghijklm  
nopqrstuvwxyz  
0123456789  
!@#%&\*

VISTA SANS REGULAR 22 POINT

g g

VISTA SANS BOLD & ALTERNATE BOLD 100 POINT

abcdef

VISTA SANS LIGHT 52 POINT

**Right now** I am sitting on a hill overlooking the Marble Fork of the Kaweah River. The colors are glorious—fleecy white clouds, a clear blue sky, distant blue hills flecked with snow, tall pines all around me, *monstrous* grey glacial boulders, and patches of sunlit moss on the fir trees. The snow water rushes and pounds through its rocky channel, tumbling frothily into lucent green pools.

VISTA SANS LIGHT 12/16 POINT

**Far to the north and east** the purple mesas stretched. Cloud banks arched everywhere overhead, stretching in long lines to the horizons. There was an endless variety of cloud forms, like swirls of smoke, like puff balls. Here and there where a *sunshaft* pierced a low hung cloud bar, the mesas were golden brown and vermilion.

VISTA SANS LIGHT 8/12 POINT

**Right now** I am sitting on a hill overlooking the Marble Fork of the Kaweah River. The colors are glorious—fleecy white clouds, a clear blue sky, distant blue hills flecked with snow, tall pines all around me, *monstrous* grey glacial boulders, and patches of sunlit moss on the fir trees. The snow water rushes and pounds through its rocky channel, tumbling frothily into lucent green pools.

VISTA SANS REGULAR 12/16 POINT

**Far to the north and east** the purple mesas stretched. Cloud banks arched everywhere overhead, stretching in long lines to the horizons. There was an endless variety of cloud forms, like swirls of smoke, like puff balls. Here and there where a *sunshaft* pierced a low hung cloud bar, the mesas were golden brown and vermilion.

VISTA SANS REGULAR 8/12 POINT

ABCDEFGHIJKLMNOPQRSTUVWXYZ

1. SMALL CAPS LIGHT

ABCDEFGHIJKLMNOPQRSTUVWXYZ

2. SMALL CAPS REGULAR

ABCDEFGHIJKLMNOPQRSTUVWXYZ

3. SMALL CAPS BOLD

ABCDEFGHIJKLMNOPQRSTUVWXYZ

4. SMALL CAPS ITALIC LIGHT

ABCDEFGHIJKLMNOPQRSTUVWXYZ

5. SMALL CAPS ITALIC REGULAR

ABCDEFGHIJKLMNOPQRSTUVWXYZ

6. SMALL CAPS ITALIC BOLD

ABCDEFGHIJ  
 KLMNOPQRS  
 TUVWXYZ  
 ABCDEFGHIJKLM  
 NOPQRSTUVWXYZ  
 0123456789  
 !?@#%&\*

VISTA SANS SMALL CAPS REGULAR 22 POINT

G G

VISTA SANS SMALL CAPS BOLD 100 POINT

ABCDEF

VISTA SANS SMALL CAPS LIGHT 52 POINT

**RIGHT NOW I AM SITTING** ON A HILL OVERLOOKING THE MARBLE FORK OF THE KAWEAH RIVER. THE COLORS ARE GLO-RIOUS—FLEECY WHITE CLOUDS, A CLEAR BLUE SKY, DISTANT BLUE HILLS FLECKED WITH SNOW, TALL PINES ALL AROUND ME, MONSTROUS GREY GLACIAL BOULDERS, AND PATCHES OF SUN-LIT MOSS ON THE FIR TREES. THE SNOW WATER *RUSHES* AND POUNDS THROUGH ITS ROCKY CHANNEL, TUMBLING FROTHILY

VISTA SANS SMALL CAPS LIGHT 12/16 POINT

**FAR TO THE NORTH AND EAST** THE PURPLE MESAS STRETCHED. CLOUD BANKS ARCHED EVERY-WHERE OVERHEAD, STRETCHING IN LONG LINES TO THE HORIZONS. THERE WAS AN ENDLESS VARIETY OF CLOUD FORMS, LIKE *SWIRLS OF SMOKE*, LIKE PUFF BALLS. HERE AND THERE WHERE A SUNSHAFT PIERCED A LOW HUNG CLOUD BAR, THE MESAS WERE GOLDEN BROWN AND

VISTA SANS SMALL CAPS LIGHT 8/12 POINT

**RIGHT NOW I AM SITTING** ON A HILL OVERLOOKING THE MARBLE FORK OF THE KAWEAH RIVER. THE COLORS ARE GLO-RIOUS—FLEECY WHITE CLOUDS, A CLEAR BLUE SKY, DISTANT BLUE HILLS FLECKED WITH SNOW, TALL PINES ALL AROUND ME, MONSTROUS GREY GLACIAL BOULDERS, AND PATCHES OF SUN-LIT MOSS ON THE FIR TREES. THE SNOW WATER *RUSHES* AND POUNDS THROUGH ITS ROCKY CHANNEL, TUMBLING FROTHILY

VISTA SANS SMALL CAPS REGULAR 12/16 POINT

**FAR TO THE NORTH AND EAST** THE PURPLE MESAS STRETCHED. CLOUD BANKS ARCHED EVERY-WHERE OVERHEAD, STRETCHING IN LONG LINES TO THE HORIZONS. THERE WAS AN ENDLESS VARIETY OF CLOUD FORMS, LIKE *SWIRLS OF SMOKE*, LIKE PUFF BALLS. HERE AND THERE WHERE A SUNSHAFT PIERCED A LOW HUNG CLOUD BAR, THE MESAS WERE GOLDEN BROWN AND

VISTA SANS SMALL CAPS REGULAR 8/12 POINT

1. BOOK  
 ABCDEFGabcdef

2. MEDIUM  
 ABCDEFGabcdef

3. BLACK  
 ABCDEFGabcdef

4. ALTERNATE BOOK  
 ABCDEFGabcdef

5. ALTERNATE MEDIUM  
 ABCDEFGabcdef

6. ALTERNATE BLACK  
 ABCDEFGabcdef

7. BOOK ITALIC  
 ABCDEFGabcdef

8. MEDIUM ITALIC  
 ABCDEFGabcdef

9. BLACK ITALIC  
 ABCDEFGabcdef

10. ALTERNATE BOOK ITALIC  
 ABCDEFGabcdef

11. ALTERNATE MEDIUM ITALIC  
 ABCDEFGabcdef

12. ALTERNATE BLACK ITALIC  
 ABCDEFGabcdef

ABCDEFGHIJ  
 KLMNOPQRS  
 TUVWXYZ  
 abcdefghijklm  
 nopqrstuvwxyz  
 0123456789  
 !?@#%&\*

VISTA SANS MEDIUM 22 POINT

**h** | **h**

VISTA SANS BLACK ITALIC & ALTERNATE 100 POINT

abcdef

VISTA SANS BOOK 52 POINT

**Right now** I am sitting on a hill overlooking the Marble Fork of the Kaweah River. The colors are glorious—fleecy white clouds, a clear blue sky, distant blue hills flecked with snow, tall pines all around me, *monstrous* grey glacial boulders, and patches of sunlit moss on the fir trees. The snow water rushes and pounds through its rocky channel, tumbling frothily into lucent green pools.

VISTA SANS BOOK 12/16 POINT

**Far to the north and east** the purple mesas stretched. Cloud banks arched everywhere overhead, stretching in long lines to the horizons. There was an endless variety of cloud forms, like swirls of smoke, like puff balls. Here and there where a *sunshaft* pierced a low hung cloud bar, the mesas were golden brown and vermilion.

VISTA SANS BOOK 8/12 POINT

**Right now** I am sitting on a hill overlooking the Marble Fork of the Kaweah River. The colors are glorious—fleecy white clouds, a clear blue sky, distant blue hills flecked with snow, tall pines all around me, *monstrous* grey glacial boulders, and patches of sunlit moss on the fir trees. The snow water rushes and pounds through its rocky channel, tumbling frothily into lucent green pools.

VISTA SANS MEDIUM 12/16 POINT

**Far to the north and east** the purple mesas stretched. Cloud banks arched everywhere overhead, stretching in long lines to the horizons. There was an endless variety of cloud forms, like swirls of smoke, like puff balls. Here and there where a *sunshaft* pierced a low hung cloud bar, the mesas were golden brown and vermilion.

VISTA SANS MEDIUM 8/12 POINT

ABCDEFGH ABCDEF

1. SMALL CAPS BOOK

ABCDEFGH ABCDEF

2. SMALL CAPS MEDIUM

ABCDEFGH ABCDEF

3. SMALL CAPS BLACK

ABCDEFGH ABCDEF

4. SMALL CAPS ITALIC BOOK

ABCDEFGH ABCDEF

5. SMALL CAPS ITALIC MEDIUM

ABCDEFGH ABCDEF

6. SMALL CAPS ITALIC BLACK

ABCDEFGHI  
IJKLMNOPQRS  
TUVWXYZ  
ABCDEFGHIJKLM  
NOPQRSTUVWXYZ  
0123456789  
!@#%&\*

VISTA SANS SMALL CAPS MEDIUM 22 POINT

R R

VISTA SANS SMALL CAPS BLACK 100 POINT

ABCDEF

VISTA SANS SMALL CAPS BOOK 52 POINT

**RIGHT NOW I AM SITTING** ON A HILL OVERLOOKING THE MARBLE FORK OF THE KAWEAH RIVER. THE COLORS ARE GLO-  
RIOUS—FLEECY WHITE CLOUDS, A CLEAR BLUE SKY, DISTANT  
BLUE HILLS FLECKED WITH SNOW, TALL PINES ALL AROUND ME,  
MONSTROUS GREY GLACIAL BOULDERS, AND PATCHES OF SUN-  
LIT MOSS ON THE FIR TREES. THE SNOW WATER *RUSHES* AND  
POUNDS THROUGH ITS ROCKY CHANNEL, TUMBLING FROTHILY

VISTA SANS SMALL CAPS BOOK 12/16 POINT

**FAR TO THE NORTH AND EAST** THE PURPLE MESAS STRETCHED. CLOUD BANKS ARCHED EVERY-  
WHERE OVERHEAD, STRETCHING IN LONG LINES TO THE HORIZONS. THERE WAS AN ENDLESS  
VARIETY OF CLOUD FORMS, LIKE *SWIRLS OF SMOKE*, LIKE PUFF BALLS. HERE AND THERE WHERE  
A SUNSHAFT PIERCED A LOW HUNG CLOUD BAR, THE MESAS WERE GOLDEN BROWN AND

VISTA SANS SMALL CAPS BOOK 8/12 POINT

**RIGHT NOW I AM SITTING** ON A HILL OVERLOOKING THE MARBLE FORK OF THE KAWEAH RIVER. THE COLORS ARE GLO-  
RIOUS—FLEECY WHITE CLOUDS, A CLEAR BLUE SKY, DISTANT  
BLUE HILLS FLECKED WITH SNOW, TALL PINES ALL AROUND ME,  
MONSTROUS GREY GLACIAL BOULDERS, AND PATCHES OF SUN-  
LIT MOSS ON THE FIR TREES. THE SNOW WATER *RUSHES* AND  
POUNDS THROUGH ITS ROCKY CHANNEL, TUMBLING FROTHILY

VISTA SANS SMALL CAPS MEDIUM 12/16 POINT

**FAR TO THE NORTH AND EAST** THE PURPLE MESAS STRETCHED. CLOUD BANKS ARCHED EVERY-  
WHERE OVERHEAD, STRETCHING IN LONG LINES TO THE HORIZONS. THERE WAS AN ENDLESS  
VARIETY OF CLOUD FORMS, LIKE *SWIRLS OF SMOKE*, LIKE PUFF BALLS. HERE AND THERE WHERE  
A SUNSHAFT PIERCED A LOW HUNG CLOUD BAR, THE MESAS WERE GOLDEN BROWN AND

VISTA SANS SMALL CAPS MEDIUM 8/12 POINT

ABCDEFGHIJGabcde

1. LIGHT

ABCDEFGHIJGabcde

2. REGULAR

**ABCDEFGHIJGabcde**

3. BOLD

ABCDEFGHIJGabcde

4. ALTERNATE LIGHT

ABCDEFGHIJGabcde

5. ALTERNATE REGULAR

**ABCDEFGHIJGabcde**

6. ALTERNATE BOLD

ABCDEFGHIJGabcde

7. LIGHT ITALIC

ABCDEFGHIJGabcde

8. REGULAR ITALIC

**ABCDEFGHIJGabcde**

9. BOLD ITALIC

ABCDEFGHIJGabcde

10. ALTERNATE LIGHT ITALIC

ABCDEFGHIJGabcde

11. ALTERNATE REGULAR ITALIC

**ABCDEFGHIJGabcde**

12. ALTERNATE BOLD ITALIC

ABCDEFGHIH  
IJKLMNOPQRS  
TUVWXYZ  
abcdefghijklm  
nopqrstuvwxyz  
0123456789  
!@#%&\*

VISTA SLAB REGULAR 22 POINT

**K k**

VISTA SLAB BOLD 100 POINT

abcdef

VISTA SLAB LIGHT 52 POINT

**Right now I am sitting on a hill** overlooking the Marble Fork of the Kaweah River. The colors are glorious—fleecy white clouds, a clear blue sky, distant blue hills flecked with snow, tall pines all around me, *monstrous* grey glacial boulders, and patches of sunlit moss on the fir trees. The snow water rushes and pounds through its rocky channel, tumbling frothily into lucent green

VISTA SLAB LIGHT 12/16 POINT

**Far to the north and east** the purple mesas stretched. Cloud banks arched everywhere overhead, stretching in long lines to the horizons. There was an endless variety of cloud forms, like swirls of smoke, like puff balls. Here and there where a *sunshaft* pierced a low hung cloud bar, the mesas were golden brown and

VISTA SLAB LIGHT 8/12 POINT

**Right now I am sitting on a hill** overlooking the Marble Fork of the Kaweah River. The colors are glorious—fleecy white clouds, a clear blue sky, distant blue hills flecked with snow, tall pines all around me, *monstrous* grey glacial boulders, and patches of sunlit moss on the fir trees. The snow water rushes and pounds through its rocky channel, tumbling frothily into lucent green

VISTA SLAB REGULAR 12/16 POINT

**Far to the north and east** the purple mesas stretched. Cloud banks arched everywhere overhead, stretching in long lines to the horizons. There was an endless variety of cloud forms, like swirls of smoke, like puff balls. Here and there where a *sunshaft* pierced a low hung cloud bar, the mesas were golden brown and

VISTA SLAB REGULAR 8/12 POINT



ABCDEFGH ABCDEF

1. SMALL CAPS LIGHT

ABCDEFGH ABCDEF

2. SMALL CAPS REGULAR

**ABCDEFGH ABCDEF**

3. SMALL CAPS BOLD

ABCDEFGH ABCDEF

4. SMALL CAPS ITALIC LIGHT

*ABCDEFGH ABCDEF*

5. SMALL CAPS ITALIC REGULAR

***ABCDEFGH ABCDEF***

6. SMALL CAPS ITALIC BOLD

ABCDEFGHI  
 IJKLMNOPQRS  
 TUVWXYZ  
 ABCDEFGHIJKLM  
 NOPQRSTUVWXYZ  
 0123456789  
 !?@#%&\*

VISTA SLAB SMALL CAPS REGULAR 22 POINT

**R R**

VISTA SLAB SMALL CAPS BOLD 100 POINT

ABCDEF

VISTA SLAB SMALL CAPS LIGHT 52 POINT

**RIGHT NOW I AM SITTING** ON A HILL OVERLOOKING THE MARBLE FORK OF THE KAWEAH RIVER. THE COLORS ARE GLORIOUS—FLEECY WHITE CLOUDS, A CLEAR BLUE SKY, DISTANT BLUE MOUNTAINS FLECKED WITH SNOW, TALL PINES ALL AROUND ME, MONSTROUS GREY GLACIAL BOULDERS, AND PATCHES OF SUNLIT MOSS ON THE FIR TREES. THE SNOW WATER *RUSHES* AND *POUNDS* THROUGH ITS ROCKY CHANNEL,

VISTA SLAB SMALL CAPS LIGHT 12/16 POINT

**FAR TO THE NORTH AND EAST** THE PURPLE MESAS STRETCHED. CLOUD BANKS ARCHED EVERYWHERE OVERHEAD, STRETCHING IN LONG LINES TO THE HORIZONS. THERE WAS AN ENDLESS VARIETY OF CLOUD FORMS, LIKE *SWIRLS OF SMOKE*, LIKE PUFF BALLS. HERE AND THERE WHERE A SUNSHAFT PIERCED A LOW HUNG CLOUD BAR, THE MESAS WERE

VISTA SLAB SMALL CAPS LIGHT 8/12 POINT

**RIGHT NOW I AM SITTING** ON A HILL OVERLOOKING THE MARBLE FORK OF THE KAWEAH RIVER. THE COLORS ARE GLORIOUS—FLEECY WHITE CLOUDS, A CLEAR BLUE SKY, DISTANT BLUE MOUNTAINS FLECKED WITH SNOW, TALL PINES ALL AROUND ME, MONSTROUS GREY GLACIAL BOULDERS, AND PATCHES OF SUNLIT MOSS ON THE FIR TREES. THE SNOW WATER *RUSHES* AND *POUNDS* THROUGH ITS

VISTA SLAB SMALL CAPS REGULAR 12/16 POINT

**FAR TO THE NORTH AND EAST** THE PURPLE MESAS STRETCHED. CLOUD BANKS ARCHED EVERYWHERE OVERHEAD, STRETCHING IN LONG LINES TO THE HORIZONS. THERE WAS AN ENDLESS VARIETY OF CLOUD FORMS, LIKE *SWIRLS OF SMOKE*, LIKE PUFF BALLS. HERE AND THERE WHERE A SUNSHAFT PIERCED A LOW HUNG CLOUD BAR, THE MESAS WERE

VISTA SLAB SMALL CAPS REGULAR 8/12 POINT



ABCDEFGHabcdef

1. BOOK

ABCDEFGHabcdef

2. MEDIUM

ABCDEFGHabcdef

3. BLACK

ABCDEFGHabcdef

4. ALTERNATE BOOK

ABCDEFGHabcdef

5. ALTERNATE MEDIUM

ABCDEFGHabcdef

6. ALTERNATE BLACK

ABCDEFGHabcdef

7. BOOK ITALIC

ABCDEFGHabcdef

8. MEDIUM ITALIC

ABCDEFGHabcdef

9. BLACK ITALIC

ABCDEFGHabcdef

10. ALTERNATE BOOK ITALIC

ABCDEFGHabcdef

11. ALTERNATE MEDIUM ITALIC

ABCDEFGHabcdef

12. ALTERNATE BLACK ITALIC

ABCDEFGH  
IJKLMNOPQRS  
TUVWXYZ  
abcdefghijklm  
nopqrstuvwxyz  
0123456789  
!@#%&\*

VISTA SLAB MEDIUM 22 POINT

**N** | **n**

VISTA SLAB BLACK & BLACK ITALIC 100 POINT

abcdef

VISTA SLAB BOOK 52 POINT

**Right now I am sitting on a hill** overlooking the Marble Fork of the Kaweah River. The colors are glorious—fleecy white clouds, a clear blue sky, distant blue hills flecked with snow, tall pines all around me, monstrous grey glacial boulders, and patches of sunlit moss on the fir trees. The snow water *rushes* and pounds through its rocky channel, tumbling frothily into

VISTA SLAB BOOK 12/16 POINT

**Far to the north and east** the purple mesas stretched. Cloud banks arched everywhere overhead, stretching in long lines to the horizons. There was an endless variety of cloud forms, like swirls of smoke, like puff balls. Here and there where a *sunshaft* pierced a low hung cloud bar, the mesas were golden brown and

VISTA SLAB BOOK 8/12 POINT

**Right now I am sitting on a hill** overlooking the Marble Fork of the Kaweah River. The colors are glorious—fleecy white clouds, a clear blue sky, distant blue hills flecked with snow, tall pines all around me, monstrous grey glacial boulders, and patches of sunlit moss on the fir trees. The snow water *rushes* and pounds through its rocky channel, tumbling frothily into

VISTA SLAB MEDIUM 12/16 POINT

**Far to the north and east** the purple mesas stretched. Cloud banks arched everywhere overhead, stretching in long lines to the horizons. There was an endless variety of cloud forms, like swirls of smoke, like puff balls. Here and there where a *sunshaft* pierced a low hung cloud bar, the mesas were golden brown and

VISTA SLAB MEDIUM 8/12 POINT

ABCDEFGHABCDEF

1. SMALL CAPS BOOK

ABCDEFGHABCDEF

2. SMALL CAPS MEDIUM

**ABCDEFABCDEF**

3. SMALL CAPS BLACK

ABCDEFGHABCDEF

4. SMALL CAPS ITALIC BOOK

*ABCDEFGHABCDEF*

5. SMALL CAPS ITALIC MEDIUM

***ABCDEFABCDEF***

6. SMALL CAPS ITALIC BLACK

ABCDEFGH  
 IJKLMNOPQRS  
 TUVWXYZ  
 ABCDEFGHIJKLM  
 NOPQRSTUVWXYZ  
 0123456789  
 !?@#%&\*

VISTA SLAB SMALL CAPS MEDIUM 22 POINT

A A

VISTA SLAB SMALL CAPS BLACK 100 POINT

A B C D E

VISTA SLAB SMALL CAPS BOOK 52 POINT

**RIGHT NOW I AM SITTING** ON A HILL OVERLOOKING THE MARBLE FORK OF THE KAWEAH RIVER. THE COLORS ARE GLORIOUS—FLEECY WHITE CLOUDS, A CLEAR BLUE SKY, DISTANT BLUE MOUNTAINS FLECKED WITH SNOW, TALL PINES ALL AROUND ME, MONSTROUS GREY GLACIAL BOULDERS, AND PATCHES OF SUNLIT MOSS ON THE FIR TREES. THE SNOW WATER *RUSHES* AND *POUNDS* THROUGH ITS

VISTA SLAB SMALL CAPS BOOK 12/16 POINT

**FAR TO THE NORTH AND EAST** THE PURPLE MESAS STRETCHED. CLOUD BANKS ARCHED EVERYWHERE OVERHEAD, STRETCHING IN LONG LINES TO THE HORIZONS. THERE WAS AN ENDLESS VARIETY OF CLOUD FORMS, LIKE *SWIRLS OF SMOKE*, LIKE PUFF BALLS. HERE AND THERE WHERE A SUNSHAFT PIERCED A LOW HUNG CLOUD BAR, THE MESAS WERE

VISTA SLAB SMALL CAPS BOOK 8/12 POINT

**RIGHT NOW I AM SITTING** ON A HILL OVERLOOKING THE MARBLE FORK OF THE KAWEAH RIVER. THE COLORS ARE GLORIOUS—FLEECY WHITE CLOUDS, A CLEAR BLUE SKY, DISTANT BLUE MOUNTAINS FLECKED WITH SNOW, TALL PINES ALL AROUND ME, MONSTROUS GREY GLACIAL BOULDERS, AND PATCHES OF SUNLIT MOSS ON THE FIR TREES. THE SNOW WATER *RUSHES* AND *POUNDS* THROUGH ITS

VISTA SLAB SMALL CAPS MEDIUM 12/16 POINT

**FAR TO THE NORTH AND EAST** THE PURPLE MESAS STRETCHED. CLOUD BANKS ARCHED EVERYWHERE OVERHEAD, STRETCHING IN LONG LINES TO THE HORIZONS. THERE WAS AN ENDLESS VARIETY OF CLOUD FORMS, LIKE *SWIRLS OF SMOKE*, LIKE PUFF BALLS. HERE AND THERE WHERE A SUNSHAFT PIERCED A LOW HUNG CLOUD BAR, THE MESAS

VISTA SLAB SMALL CAPS MEDIUM 8/12 POINT

1. LIGHT  
 ABCDEFGHabcdefgh

2. REGULAR  
 ABCDEFGHabcdefgh

3. BOLD  
**ABCDEFGHIHabcdefgh**

4. ALTERNATE LIGHT  
 ABCDEFGHabcdefgh

5. ALTERNATE REGULAR  
 ABCDEFGHabcdefgh

6. ALTERNATE BOLD  
**ABCDEFGHIHabcdefgh**

7. LIGHT ITALIC  
 ABCDEFGHabcdefgh

8. REGULAR ITALIC  
 ABCDEFGHabcdefgh

9. BOLD ITALIC  
**ABCDEFGHIHabcdefgh**

10. ALTERNATE LIGHT ITALIC  
 ABCDEFGHabcdefgh

11. ALTERNATE REGULAR ITALIC  
 ABCDEFGHabcdefgh

12. ALTERNATE BOLD ITALIC  
**ABCDEFGHIHabcdefgh**

ABCDEFGHIH  
 IJKLMNOPQRS  
 TUVWXYZ  
 abcdefghijklm  
 nopqrstuvwxyz  
 0123456789  
 !?@#%&\*

VISTA SANS NARROW REGULAR 22 POINT

g | g

VISTA SANS NARROW BOLD & ALTERNATE 100 POINT

abcdefgh

VISTA SANS NARROW LIGHT 52 POINT

**Right now I am sitting** on a hill overlooking the Marble Fork of the Kaweah River. The colors are glorious—fleecy white clouds, a clear blue sky, distant blue mountains *flecked* with snow, tall pines all around me, monstrous grey glacial boulders, and patches of sunlit moss on the fir trees. The snow water rushes and pounds through its rocky channel, tumbling frothily into lucent green pools.

VISTA SANS NARROW LIGHT 12/16 POINT

**Far to the north and east** the purple mesas stretched. Cloud banks arched everywhere overhead, stretching in long lines to the horizons. There was an endless variety of cloud forms, like swirls of smoke, like puff balls. Here and there where a *sunshaft* pierced a low hung cloud bar, the mesas were golden brown and vermilion.

VISTA SANS NARROW LIGHT 8/12 POINT, TRACKED LOOSE

**Right now I am sitting** on a hill overlooking the Marble Fork of the Kaweah River. The colors are glorious—fleecy white clouds, a clear blue sky, distant blue mountains *flecked* with snow, tall pines all around me, monstrous grey glacial boulders, and patches of sunlit moss on the fir trees. The snow water rushes and pounds through its rocky channel, tumbling frothily into lucent green pools.

VISTA SANS NARROW REGULAR 12/16 POINT

**Far to the north and east** the purple mesas stretched. Cloud banks arched everywhere overhead, stretching in long lines to the horizons. There was an endless variety of cloud forms, like swirls of smoke, like puff balls. Here and there where a *sunshaft* pierced a low hung cloud bar, the mesas were golden brown and

VISTA SANS NARROW REGULAR 8/12 POINT, TRACKED LOOSE

ABCDEFGHIJABCDEFGHIJ

1. SMALL CAPS LIGHT

ABCDEFGHIJABCDEFGHIJ

2. SMALL CAPS REGULAR

ABCDEFGHIJABCDEFGHIJ

3. SMALL CAPS BOLD

ABCDEFGHIJABCDEFGHIJ

4. SMALL CAPS ITALIC LIGHT

ABCDEFGHIJABCDEFGHIJ

5. SMALL CAPS ITALIC REGULAR

ABCDEFGHIJABCDEFGHIJ

6. SMALL CAPS ITALIC BOLD

ABCDEFGHIH

IJKLMNOPQRS

TUVWXYZ

ABCDEFGHIJKLM

NOPQRSTUVWXYZ

0123456789

!@#%&amp;\*

VISTA SANS NARROW SMALL CAPS REGULAR 22 POINT

B B

VISTA SANS NARROW SMALL CAPS BOLD 100 POINT

ABCDEFGG

VISTA SANS NARROW SMALL CAPS LIGHT 52 POINT

**RIGHT NOW I AM SITTING** ON A HILL OVERLOOKING THE MARBLE FORK OF THE KAWEAH RIVER. THE COLORS ARE GLORIOUS—FLEECY WHITE CLOUDS, A CLEAR BLUE SKY, DISTANT BLUE MOUNTAINS FLECKED WITH SNOW, TALL PINES ALL AROUND ME, MONSTROUS GREY GLACIAL BOULDERS, AND PATCHES OF SUNLIT MOSS ON THE FIR TREES. THE SNOW WATER *RUSHES* AND *POUNDS* THROUGH ITS ROCKY CHANNEL, TUMBLING FROTHILY INTO LUCENT GREEN POOLS.

VISTA SANS NARROW SMALL CAPS LIGHT 12/16 POINT

**FAR TO THE NORTH AND EAST** THE PURPLE MESAS STRETCHED. CLOUD BANKS ARCHED EVERYWHERE OVERHEAD, STRETCHING IN LONG LINES TO THE HORIZONS. THERE WAS AN *ENDLESS* VARIETY OF CLOUD FORMS, LIKE SWIRLS OF SMOKE, LIKE PUFF BALLS. HERE AND THERE WHERE A SUNSHAFT PIERCED A LOW HUNG CLOUD BAR, THE MESAS WERE GOLDEN BROWN AND VERMILLION.

VISTA SANS NARROW SMALL CAPS LIGHT 8/12 POINT, TRACKED LOOSE

**RIGHT NOW I AM SITTING** ON A HILL OVERLOOKING THE MARBLE FORK OF THE KAWEAH RIVER. THE COLORS ARE GLORIOUS—FLEECY WHITE CLOUDS, A CLEAR BLUE SKY, DISTANT BLUE MOUNTAINS FLECKED WITH SNOW, TALL PINES ALL AROUND ME, MONSTROUS GREY GLACIAL BOULDERS, AND PATCHES OF SUNLIT MOSS ON THE FIR TREES. THE SNOW WATER *RUSHES* AND *POUNDS* THROUGH ITS ROCKY CHANNEL, TUMBLING FROTHILY INTO LUCENT GREEN POOLS.

VISTA SANS NARROW SMALL CAPS REGULAR 12/16 POINT

**FAR TO THE NORTH AND EAST** THE PURPLE MESAS STRETCHED. CLOUD BANKS ARCHED EVERYWHERE OVERHEAD, STRETCHING IN LONG LINES TO THE HORIZONS. THERE WAS AN *ENDLESS* VARIETY OF CLOUD FORMS, LIKE SWIRLS OF SMOKE, LIKE PUFF BALLS. HERE AND THERE WHERE A SUNSHAFT PIERCED A LOW HUNG CLOUD BAR, THE MESAS WERE GOLDEN BROWN AND VERMILLION.

VISTA SANS NARROW SMALL CAPS REGULAR 8/12 POINT, TRACKED LOOSE

ABCDEFGHabcdefgh

1. BOOK

ABCDEFGHabcdefgh

2. MEDIUM

**ABCDEFGHabcdefgh**

3. BLACK

ABCDEFGHabcdefgh

4. ALTERNATE BOOK

ABCDEFGHabcdefgh

5. ALTERNATE MEDIUM

**ABCDEFGHabcdefgh**

6. ALTERNATE BLACK

ABCDEFGHabcdefgh

7. BOOK ITALIC

ABCDEFGHabcdefgh

8. MEDIUM ITALIC

**ABCDEFGHabcdefgh**

9. BLACK ITALIC

ABCDEFGHabcdefgh

10. ALTERNATE BOOK ITALIC

ABCDEFGHabcdefgh

11. ALTERNATE MEDIUM ITALIC

**ABCDEFGHabcdefgh**

12. ALTERNATE BLACK ITALIC

ABCDEFGH  
 IJKLMNOPQRS  
 TUVWXYZ  
 abcdefghijklm  
 nopqrstuvwxyz  
 0123456789  
 !?@#%&\*

VISTA SANS NARROW MEDIUM 22 POINT

**f** | **f**

VISTA SANS NARROW BLACK ITALIC & ALTERNATE 100 POINT

abcdefghijklmnop

VISTA SANS NARROW BOOK 52 POINT

***Right now I am sitting*** on a hill overlooking the Marble Fork of the Kaweah River. The colors are glorious—fleecy white clouds, a clear blue sky, distant blue hills *flecked* with snow, tall pines all around me, monstrous grey glacial boulders, and patches of sunlit moss on the fir trees. The snow water rushes and pounds through its rocky channel, tumbling frothily into lucent green pools.

VISTA SANS NARROW BOOK 12/16 POINT

***Far to the north and east*** the purple mesas stretched. Cloud banks arched everywhere overhead, stretching in long lines to the horizons. There was an endless variety of cloud forms, like swirls of smoke, like puff balls. Here and there where a *sunshaft* pierced a low hung cloud bar, the mesas were golden brown and vermilion.

VISTA SANS NARROW BOOK 8/12 POINT, TRACKED LOOSE

***Right now I am sitting*** on a hill overlooking the Marble Fork of the Kaweah River. The colors are glorious—fleecy white clouds, a clear blue sky, distant blue hills *flecked* with snow, tall pines all around me, monstrous grey glacial boulders, and patches of sunlit moss on the fir trees. The snow water rushes and pounds through its rocky channel, tumbling frothily into lucent green pools.

VISTA SANS NARROW MEDIUM 12/16 POINT

***Far to the north and east*** the purple mesas stretched. Cloud banks arched everywhere overhead, stretching in long lines to the horizons. There was an endless variety of cloud forms, like swirls of smoke, like puff balls. Here and there where a *sunshaft* pierced a low hung cloud bar, the mesas were golden brown and

VISTA SANS NARROW MEDIUM 8/12 POINT, TRACKED LOOSE

ABCDEFGHABCDEFGH

1. SMALL CAPS BOOK

ABCDEFGHABCDEFGH

2. SMALL CAPS MEDIUM

ABCDEFGHABCDEFGH

3. SMALL CAPS BLACK

ABCDEFGHABCDEFGH

4. SMALL CAPS ITALIC BOOK

ABCDEFGHABCDEFGH

5. SMALL CAPS ITALIC MEDIUM

ABCDEFGHABCDEFGH

6. SMALL CAPS ITALIC BLACK

ABCDEFGH  
IJKLMNOPQRS  
TUVWXYZ

ABCDEFGHIJKLM  
NOPQRSTUVWXYZ

0123456789

!@#%&\*

VISTA SANS NARROW SMALL CAPS MEDIUM 22 POINT

A A

VISTA SANS NARROW SMALL CAPS BLACK 100 POINT

ABCDEFGG

VISTA SANS NARROW SMALL CAPS BOOK 50 POINT

**RIGHT NOW I AM SITTING ON A HILL** OVERLOOKING THE MARBLE FORK OF THE KAWEAH RIVER. THE COLORS ARE GLORIOUS—FLEECY WHITE CLOUDS, A CLEAR BLUE SKY, DISTANT BLUE HILLS FLECKED WITH SNOW, TALL PINES ALL AROUND ME, MONSTROUS GREY GLACIAL BOULDERS, AND PATCHES OF SUNLIT MOSS ON THE FIR TREES. THE SNOW WATER *RUSHES* AND *POUNDS* THROUGH ITS ROCKY CHANNEL, TUMBLING FROTHILY INTO LUCENT GREEN POOLS.

VISTA SANS NARROW SMALL CAPS BOOK 12/16 POINT

**FAR TO THE NORTH AND EAST** THE PURPLE MESAS STRETCHED. CLOUD BANKS ARCHED EVERYWHERE OVERHEAD, STRETCHING IN LONG LINES TO THE HORIZONS. THERE WAS AN *ENDLESS VARIETY* OF CLOUD FORMS, LIKE SWIRLS OF SMOKE, LIKE PUFF BALLS. HERE AND THERE WHERE A SUNSHAFT PIERCED A LOW HUNG CLOUD BAR, THE MESAS WERE GOLDEN BROWN AND VERMILION.

VISTA SANS NARROW SMALL CAPS BOOK 8/12 POINT, TRACKED LOOSE

**RIGHT NOW I AM SITTING ON A HILL** OVERLOOKING THE MARBLE FORK OF THE KAWEAH RIVER. THE COLORS ARE GLORIOUS—FLEECY WHITE CLOUDS, A CLEAR BLUE SKY, DISTANT BLUE HILLS FLECKED WITH SNOW, TALL PINES ALL AROUND ME, MONSTROUS GREY GLACIAL BOULDERS, AND PATCHES OF SUNLIT MOSS ON THE FIR TREES. THE SNOW WATER *RUSHES* AND *POUNDS* THROUGH ITS ROCKY CHANNEL, TUMBLING FROTHILY INTO LUCENT GREEN POOLS.

VISTA SANS NARROW SMALL CAPS MEDIUM 12/16 POINT

**FAR TO THE NORTH AND EAST** THE PURPLE MESAS STRETCHED. CLOUD BANKS ARCHED EVERYWHERE OVERHEAD, STRETCHING IN LONG LINES TO THE HORIZONS. THERE WAS AN *ENDLESS VARIETY* OF CLOUD FORMS, LIKE SWIRLS OF SMOKE, LIKE PUFF BALLS. HERE AND THERE WHERE A SUNSHAFT PIERCED A LOW HUNG CLOUD BAR, THE MESAS WERE GOLDEN BROWN AND VERMILION.

VISTA SANS NARROW SMALL CAPS MEDIUM 8/12 POINT, TRACKED LOOSE

## VISTA SANS

aaa aaaa aaaa	<b>Vista Sans Package One (12 FONTS)</b> Light, Regular and Bold, plus Italics and Alternates	\$95.00
AA AA AA	<b>Vista Sans Package Two (6 FONTS)</b> Light, Regular and Bold Small Caps plus Italics	\$65.00
aaa aaaa aaaa	<b>Vista Sans Package Three (12 FONTS)</b> Book, Medium and Black, plus Italics and Alternates	\$95.00
AA AA AA	<b>Vista Sans Package Four (6 FONTS)</b> Book, Medium and Black Small Caps plus Italics	\$65.00
	<b>Vista Sans Volume → Save \$71.00</b> Includes all 36 Vista Sans fonts in Classic format.	\$249.00
	<b>Vista Sans OpenType Volume</b> Includes all Vista Sans fonts plus additional features.	\$299.00
	<b>Vista Sans OpenType Volume CE</b> Includes all Vista Sans fonts with support for Baltic, Turkish, Maltese and Central European languages.	\$399.00

## VISTA SANS NARROW

aaa aaaa aaaa	<b>Vista Sans Narrow Package One (12 FONTS)</b> Light, Regular and Bold, plus Italics and Alternates	\$95.00
AA AA AA	<b>Vista Sans Narrow Package Two (6 FONTS)</b> Light, Regular and Bold Small Caps plus Italics	\$65.00
aaa aaaa aaaa	<b>Vista Sans Narrow Package Three (12 FONTS)</b> Book, Medium and Black, plus Italics and Alternates	\$95.00
AA AA AA	<b>Vista Sans Narrow Package Four (6 FONTS)</b> Book, Medium and Black Small Caps plus Italics	\$65.00
	<b>Vista Sans Narrow Volume → Save \$71.00</b> Includes all 36 Vista Sans Narrow fonts in Classic format.	\$249.00
	<b>Vista Sans Narrow OpenType Volume</b> Includes all Vista Sans Narrow fonts plus additional features.	\$299.00

## VISTA SLAB

aaa aaaa aaaa	<b>Vista Slab Package One (12 FONTS)</b> Light, Regular and Bold, plus Italics and Alternates	\$95.00
AA AA AA	<b>Vista Slab Package Two (6 FONTS)</b> Light, Regular and Bold Small Caps plus Italics	\$65.00
aaa aaaa aaaa	<b>Vista Slab Package Three (12 FONTS)</b> Book, Medium and Black, plus Italics and Alternates	\$95.00
AA AA AA	<b>Vista Slab Package Four (6 FONTS)</b> Book, Medium and Black Small Caps plus Italics	\$65.00
	<b>Vista Slab Volume → Save \$71.00</b> Includes all 36 Vista Slab fonts in Classic format.	\$249.00
	<b>Vista Slab OpenType Volume</b> Includes all Vista Slab fonts plus additional features.	\$299.00

## OPENTYPE FORMAT

The OpenType format incorporates typographic features such as small caps, ligatures, old style numerals and lining numerals, all within one font file (SEE PAGE 3), thereby simplifying font management and usage. OpenType font files are also cross-platform compatible; they work on both Macintosh and Windows platforms.

Do note that accessing OpenType typographic features requires an application which supports OpenType such as Adobe InDesign CS2 or Adobe Photoshop 6.

Registered customers may upgrade classic format fonts to the OpenType format for 50% of the OpenType price. To order an upgrade, please go to: [www.emigre.com/UpgradeForm.php](http://www.emigre.com/UpgradeForm.php)

Vista fonts are available in both OpenType and Classic (TYPE 1) formats.



### EMIGRE MAGAZINE BACK ISSUES

Selected back issues remain available. These collectors' copies (available in limited quantities) start at \$12.00. Visit our web site for a full showing of available issues and prices.

### EMIGRE TYPE CATALOG

To order a copy of *The Emigre Type Catalog* go to:  
[www.emigre.com/EmigreCatalog.php](http://www.emigre.com/EmigreCatalog.php)

### MISCELLANEOUS

Emigre also offers T-shirts, artists' books, posters, wrapping paper, ceramic vases, prints, photographs, and the always popular *Sampler Bag* containing a collection of Emigre goodies.

### EMIGRE NEWS

Add yourself to the *Emigre News* emailing list. We use *Emigre News* to help keep you informed of new products, services, and special limited offers.  
To sign up go to: [www.emigre.com/enews](http://www.emigre.com/enews)

### MAILING LIST

Help us keep our email and mailing lists up to date. You can change your email address, or take yourself off our mailing list at:  
[http://www.emigre.com/work/acct\\_login.php](http://www.emigre.com/work/acct_login.php)

## HOW TO ORDER

### ORDER ON-LINE

[www.emigre.com](http://www.emigre.com)  
Fonts are available for immediate download. All other items are shipped within 5 business days.

### ORDER BY FAX

Print out a faxable order form at: <http://www.emigre.com/EFax.php> and fax to: (530) 756 1300

### ORDER BY MAIL

Mail the fax form and enclose payment by check or charge your credit card.  
All checks must be payable through a us bank, in us dollars.  
Mail to:  
Emigre  
1700 Shattuck Ave., #307  
Berkeley, CA 94709  
USA

Texts reprinted from letters by Everett Ruess (1914-1934), from the book *Everett Ruess: A Vagabond For Beauty*, published by Gibbs Smith Publisher. Copyright © 1983 Gibbs M. Smith, Inc. Reprinted by permission from the publisher.  
[www.gibbs-smith.com](http://www.gibbs-smith.com)

Copyright © 2008 Emigre, Inc. All rights reserved. No part of this publication may be reproduced without written permission from Emigre, Inc. Trademarks: Emigre, Emigre Fonts, and Vista are Trademarks of Emigre, Inc. InDesign and OpenType are trademarks of Adobe Systems Inc.

Prices and availability subject to change without notice.

EMIGRE

1700 SHATTUCK AVE., #307  
BERKELEY, CA 94709  
U.S.A.

CHANGE SERVICE REQUESTED

PRSR1 STD  
U.S. POSTAGE  
PAID  
DENVER, CO  
PERMIT NO. 3280



EST. 1984